



# MONTHLY MEMBERSHIP PROGRESS REPORT

Results as of: 2/28/2015

Multiple District 25

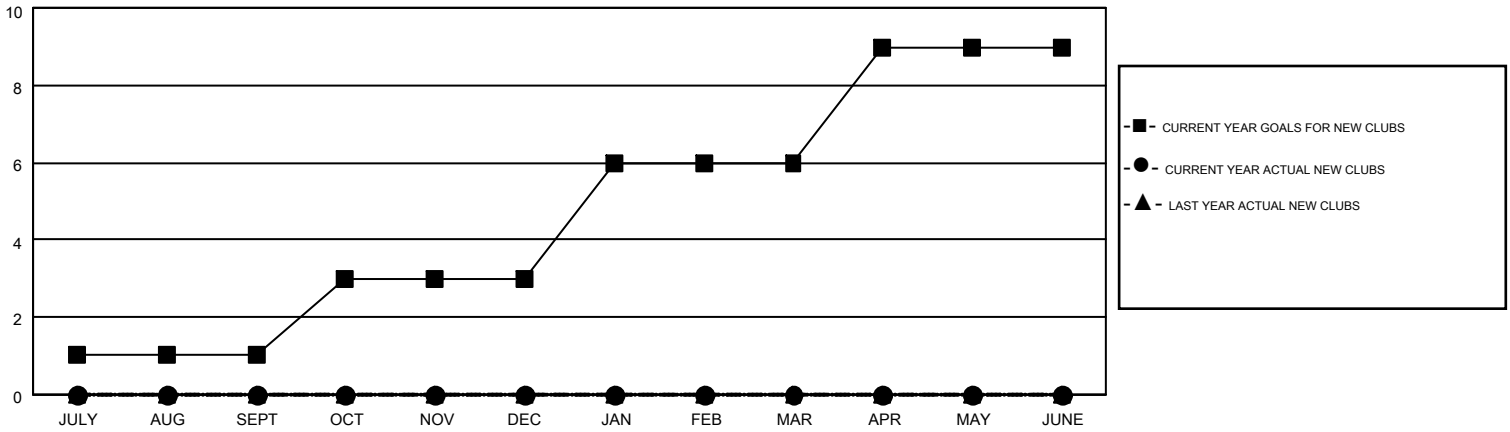
LOCATION: INDIANA

GMT: THOMAS MATNEY

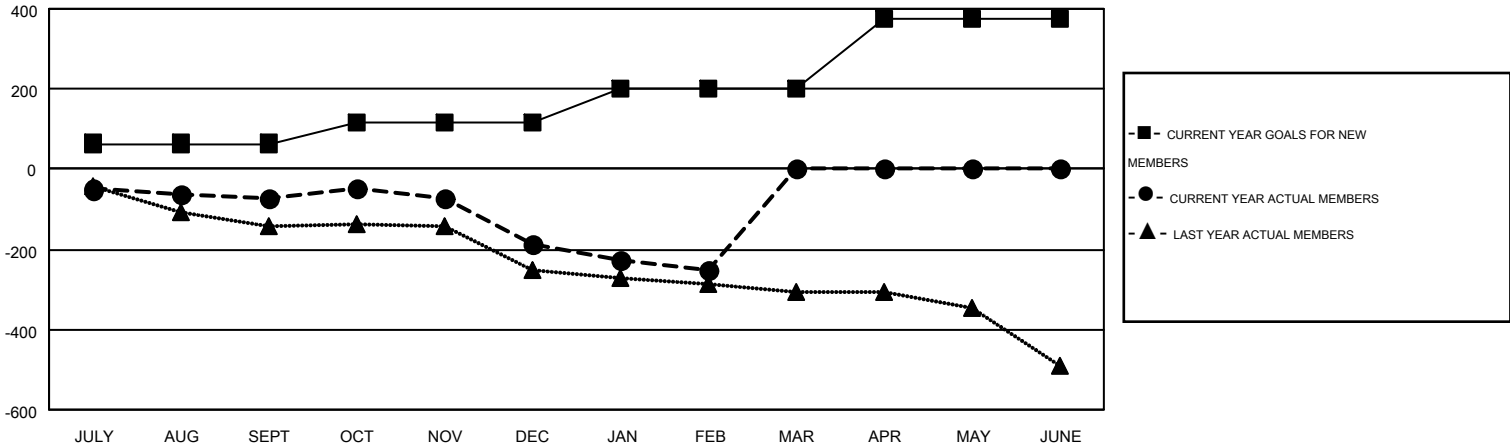
GMT CA 1

Clubs					Members				
RESULTS FOR 2014-2015					RESULTS FOR 2014-2015				
QUARTER	NEW CLUB GOAL	NEW CLUBS	DROPPED CLUBS	NET GAIN/LOSS	QUARTER	NEW MEMBER GOAL	CHARTER AND NEW MEMBERS ADDED	DROPPED MEMBERS	NET GAIN/LOSS
JULY/AUG/SEPT	1	0	0	0	JULY/AUG/SEPT	64	237	309	-72
OCT/NOV/DEC	2	0	2	-2	OCT/NOV/DEC	52	201	317	-116
JAN/FEB/MAR	3	0	2	-2	JAN/FEB/MAR	83	125	190	-65
APR/MAY/JUNE	3	0	0	0	APR/MAY/JUNE	176	0	0	0

GOALS AND ACTUAL NEW CLUBS CUMULATIVE



GOALS AND ACTUAL MEMBERS CUMULATIVE



DROPPED CLUBS: 4	213 CLUBS OF 402 ADDED 1 OR MORE NEW MEMBERS	<u>GENDER DISTRIBUTION</u>	
		MALE	7,905 (74.08%)
<u>DROPPED MEMBERS</u>		FEMALE	2,766 (25.92%)
DECEASED	130	<a href="#">CLICK HERE FOR HEALTH ASSESSMENT DATA</a>	
CLUB CANCELLED	16		
OTHER	670		
TOTAL	816	FAMILY UNIT MEMBERS	2,374
		HEAD OF HOUSEHOLD	1,157
		NON-HEAD OF HOUSEHOLD	1,217